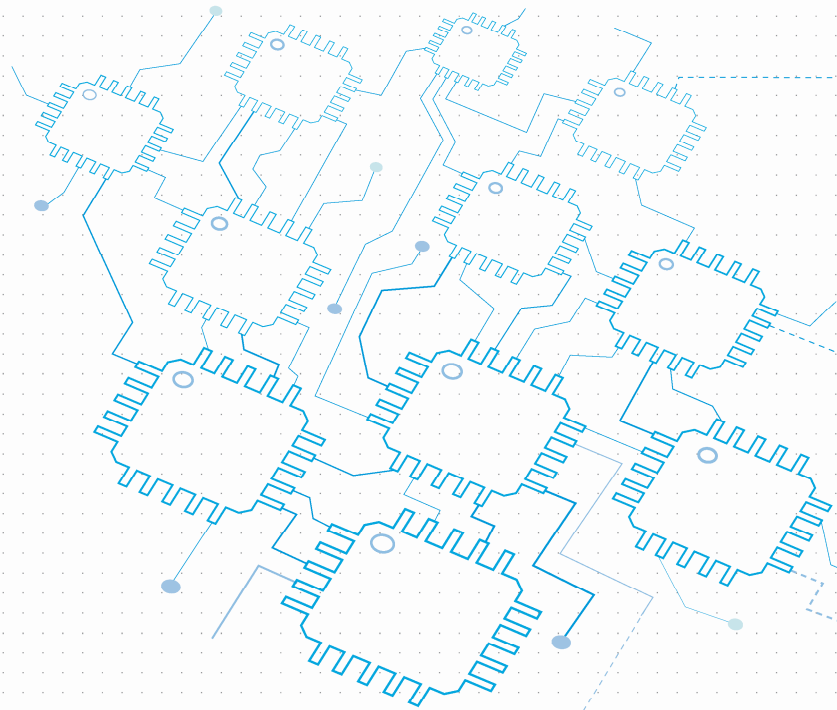




Academy of Sciences of the Czech Republic
Institute of Information Theory and Automation



department of
signal processing

ARTEMIS, ENIAC, ICT in the Czech Republic

Jiří Kadlec

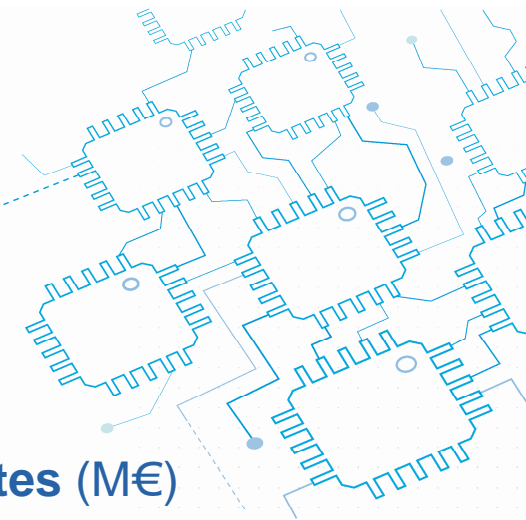
ÚTIA AV ČR, v.v.i.

<http://zs.utia.cas.cz>

kadlec@utia.cas.cz

minaSYS, Bratislava, 26.5.08

National and EU funding, Call 1



▶ Artemis member states (M€)

Austria	4	Hungary	1.98
Belgium	1.5	Ireland	1
Czech Republic	3	Italy	8
Germany	6	Netherlands	10
Denmark	1.5	Norway	1.5
Estonia	0	Portugal	0.8
Spain	6	Romania	0
Finland	6	Sweden	3
France	5	Slovenia	0.5
Greece	1	United Kingdom	3

▶ Artemis JU 35,1 (M€)

▶ Eniac member states (M€)

Austria	4	Italy	10
Belgium	1.5	Netherlands	10
Czech Republic	1.5	Norway	1.5
Estonia	0	Poland	1
France	8	Portugal	0.5
Germany	15	Spain	1
Greece	0.5	Sweden	1
Hungary	1.32	United Kingdom	0
Ireland	1		

▶ Eniac JU 32 (M€)

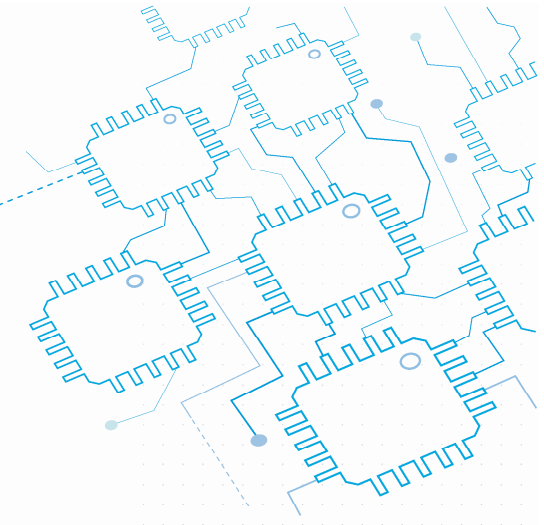
Eligibility criteria in Call1 for CZ partners, Artemis and Eniac

- ▶ Public research institutes and/or universities **must be accompanied in the same project by at least one industrial company** registered in the Czech Republic
- ▶ Projects can be supported from public financial sources only if the following results can be expected:
 - ▶ new/innovated technologies,
 - ▶ higher degree of innovation,
 - ▶ patents and/or other types of results relevant for industry (and listed in the Czech R&D Council Methodology of R&D Evaluation).
- ▶ Publications, articles or other scientific papers are not regarded as eligible result in this type of projects.

<http://www.vyzkum.cz/FrontClanek.aspx?idsekce=15607>

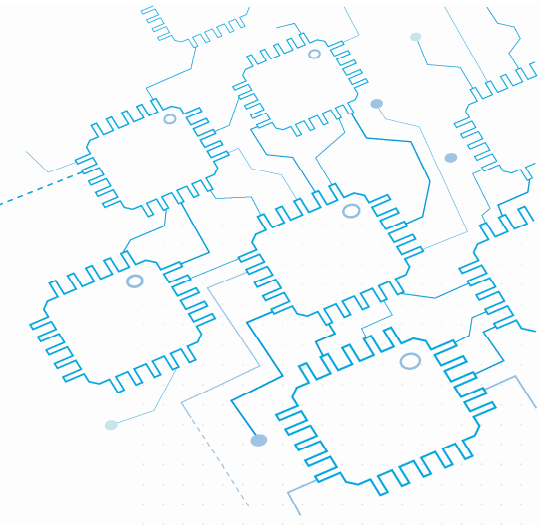
<http://www.vyzkum.cz/FrontClanek.aspx?idsekce=858>

<http://www.mvcr.cz/sbirka/2008/sb025-08.pdf>



Funding Rates Call 1

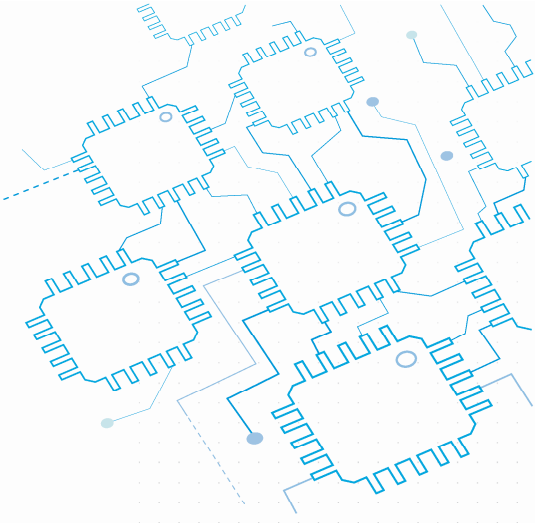
CZ partners, Artemis and Eniac



Type of Organisation Type of activity	Maximum percentage of the national subsidy to the beneficiaries			
	Large Enterprises, Groups and Associations of Enterprises	Medium Enterprises	Small Enterprises	Public Research Institutes and Universities
Fundamental/Basic Research	83,3%	83,3%	83,3%	83,3%
Industrial/Applied Research projects	33,3%	33,3%	33,3%	83,3%
Experimental development projects	8,3%	8,3%	8,3%	83,3%

- ▶ For private enterprises **total public funding** (national +ARTEMIS JU) can be provided **up to 80 %** of the eligible costs.
CZ industrial partners will be asked to plan mix of:
 - ▶ Fundamental/Basic research (total public funding up to 100%)
 - ▶ Industrial/Applied research (total public funding up to 50%)
 - ▶ Experimental development (total public funding up to 25%)
- ▶ Detailed specifications for funding are governed by:
<http://www.mvcr.cz/sbirka/2008/sb025-08.pdf>

ARTEMIS call 1



- ▶ **These are the key documents required for the preparation of your proposal:**
 - ▶ **The Annual Workprogramme 2008**
 - ▶ **Evaluation and selection procedures**
 - ▶ **Guide for applicants**
 - ▶ **The eligibility criteria**
 - ▶ **You can also get the complete Information Package.**
zip-file - 1.102 kB

<https://www.artemis-ju.eu/attachments/24/ArtemisInfopkg.zip>

ENIAC call 1

- ▷ These are the key documents required for the preparation of your proposal:

- ▷ **The Annual Workprogramme 2008**

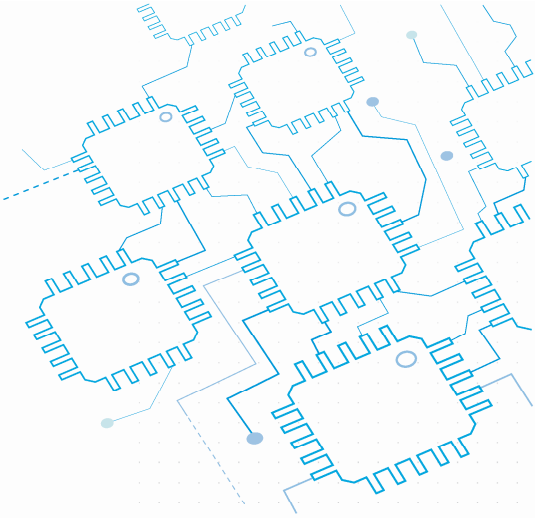
<http://www.eniac.eu/web/downloads/ENIAC-AWP2008.pdf>

- ▷ **Guide for applicants**

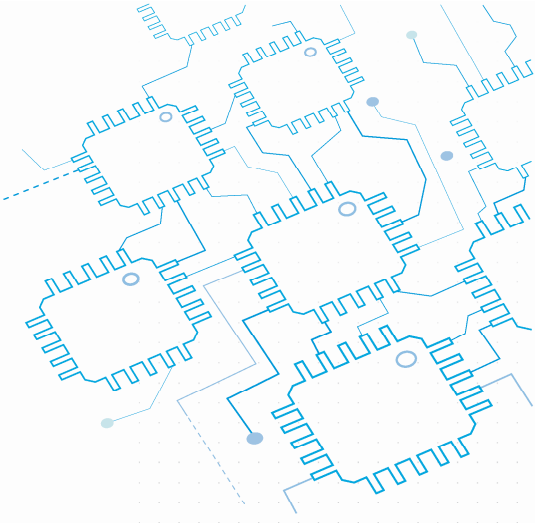
<http://www.eniac.eu/web/downloads/projects/Guide%20for%20applicants%20V06052008.pdf>

- ▷ **The eligibility criteria**

<http://www.eniac.eu/web/downloads/projects/Eligibility%20Criteria%20V070508.pdf>



ARTEMIS and ENIAC links



- ▶ Artemis: <http://www.artemis.eu/>
- (call 1) https://www.artemis-ju.eu/call_2008
- ▶ Artemisia: <https://www.artemisia-association.org/>

- ▶ Eniac: <http://www.eniac.eu/>
- ▶ Aeneas: http://www.eniac.eu/web/aeneas/aeneas_ex.php
- ▶ General information in CZ:
 - ▶ <http://www.vyzkum.cz/>
 - ▶ <http://www.msmt.cz/mezinarodni-vztahy/nove-vyzvy-sti>
 - ▶ <http://www.tc.cas.cz>
 - ▶ <http://www.oko-ist.cz>

ARTEMIS and ENIAC contact in CZ

▶ Ing. Jiří Kadlec, CSc.

UTIA AV ČR, v.v.i.

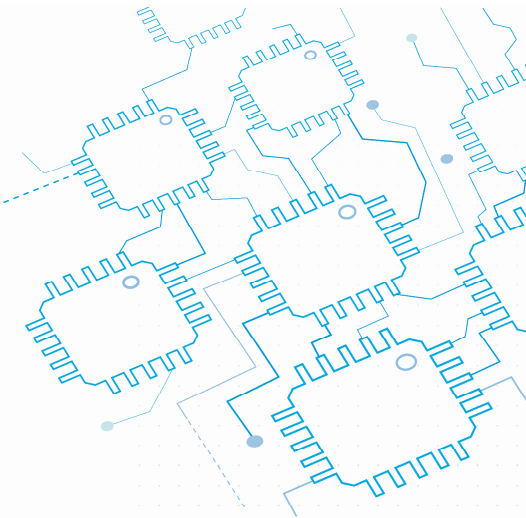
Department of Signal processing

Pod Vodárenskou věží 4, Prague 8,

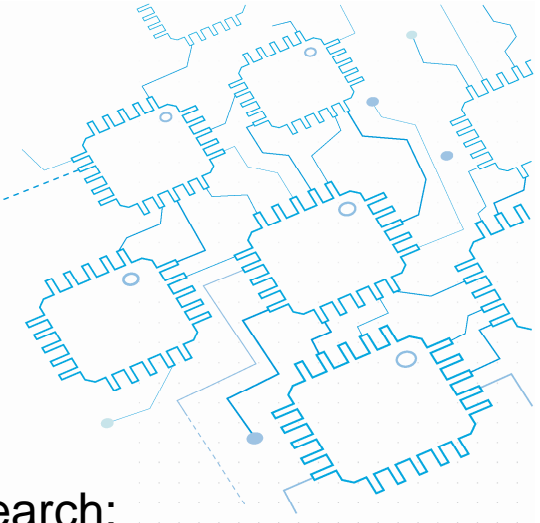
tel. 00420 2 66052216 fax 00420 2 66052511

kadlec@utia.cas.cz

<http://zs.utia.cas.cz>



ARTEMIS and ENIAC call 1 partner search support



Partner search:

<http://www.ideal-ist.net/>

OKO-ICT:

Jiří Kadlec

<http://www.oko-ict.cz>

ICT-NCP

Eva Hillerová

<http://www.tc.cz>

ETP-NCP

Lenka Havlíčková

<http://www.tc.cz>